

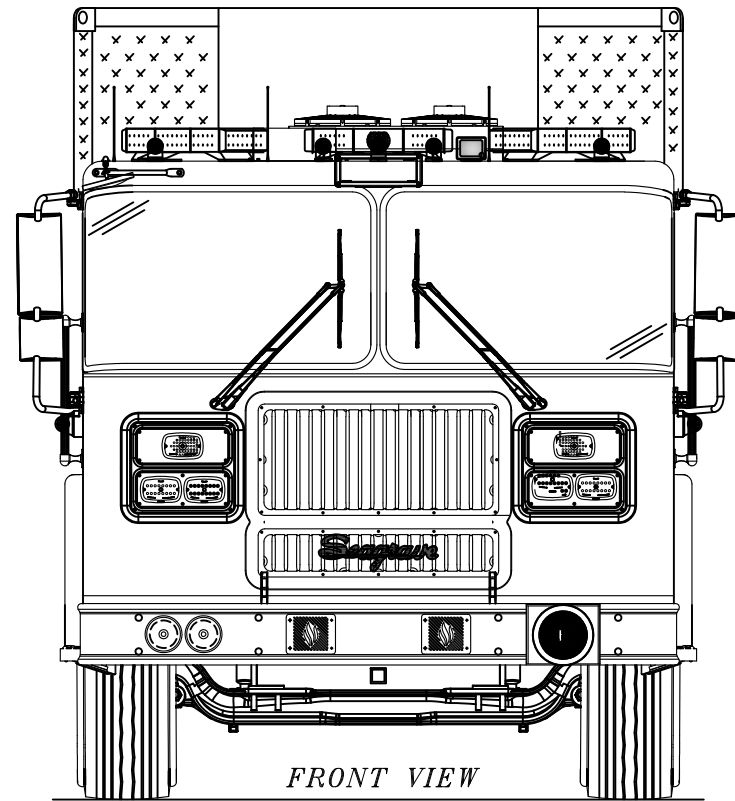
HEAVY RESCUE VEHICLE
 CUSTOM DESIGNED FOR
NEW HAVEN FIRE DEPARTMENT
 NEW HAVEN, CT
 BY RESCUE 1

- NOTES:
1. DRAWINGS ARE FOR REPRESENTATIONAL PURPOSES ONLY.
 2. ALL DIMENSIONS ARE APPROXIMATE.
 3. COMPARTMENT DIMENSIONS REPRESENT WALL TO WALL MEASUREMENTS. PASS THROUGH OPENING WILL BE SMALLER.
 4. ALL DIMENSIONS FOR OVERALL HEIGHT AND OVERALL LENGTH ARE APPROXIMATE UNTIL THE CHASSIS IS BUILT AND RECEIVED AT OUR FACTORY.

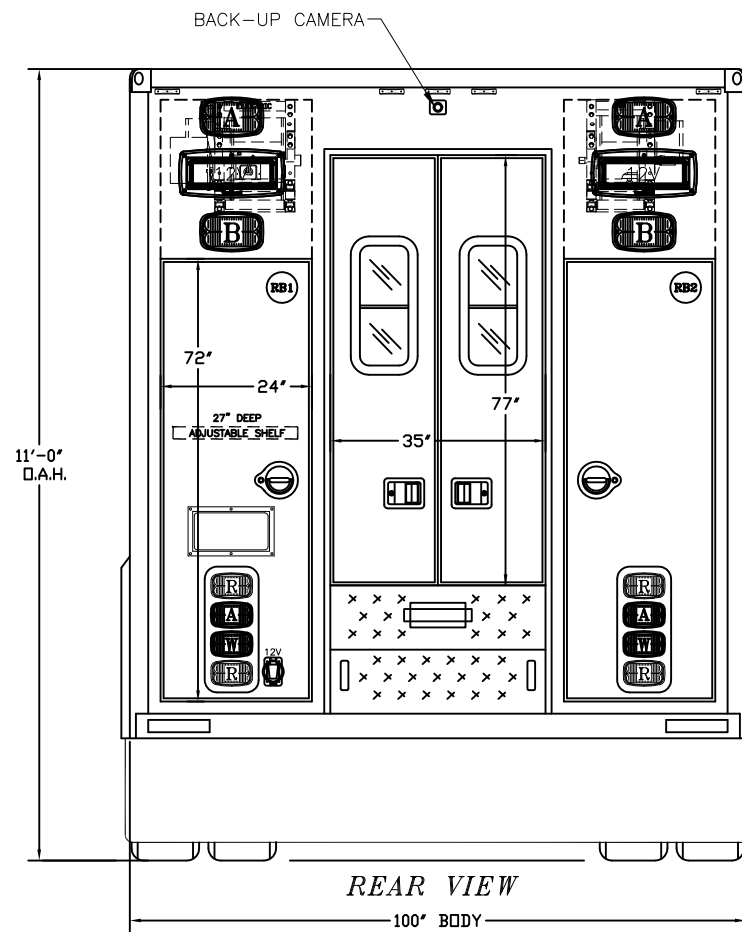
REV	QW #	DATE	DRAWN BY	APPROVED BY
E	0007	6-28-18	RAR	--
D	0006	4-4-18	RAR	--
C	0005	2-23-18	RAR	--
B	0004	12-11-17	RAR	--
A	0002	10-20-17	RAR	--

REVISIONS

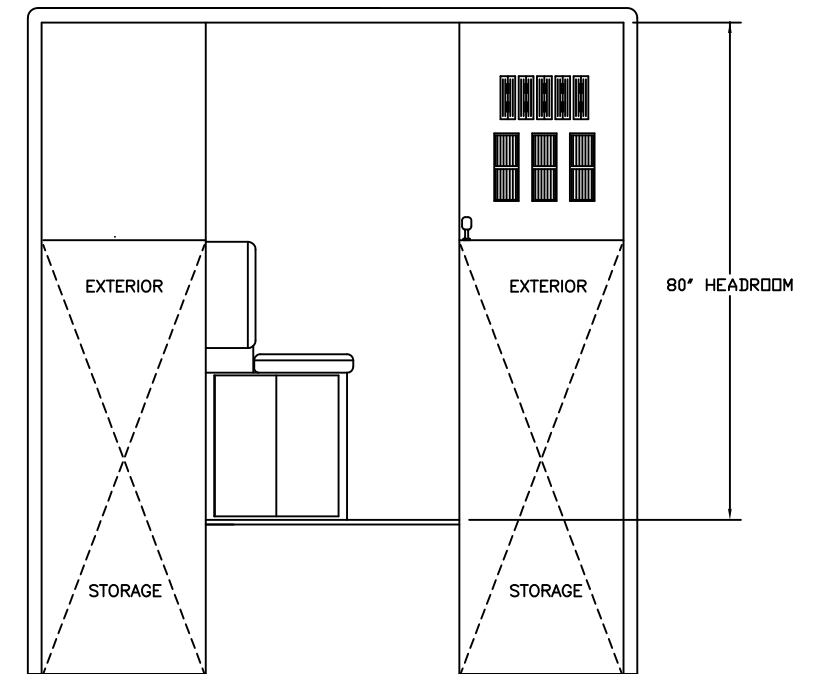
	TITLE	HEAVY RESCUE VEHICLE
	CUSTOMER	NEW HAVEN FIRE DEPARTMENT
	VEHICLE TYPE	
	FORM#	THIS DRAWING MADE FROM: REV.
DO NOT SCALE DRAWING		
DRAWN	ROGER RITTER	DATE 9-12-17
APP'VD		DATE
SCALE	3/4" = 1'-0"	SHEET 1 OF 3
JOB#	R321	DWG# 4212



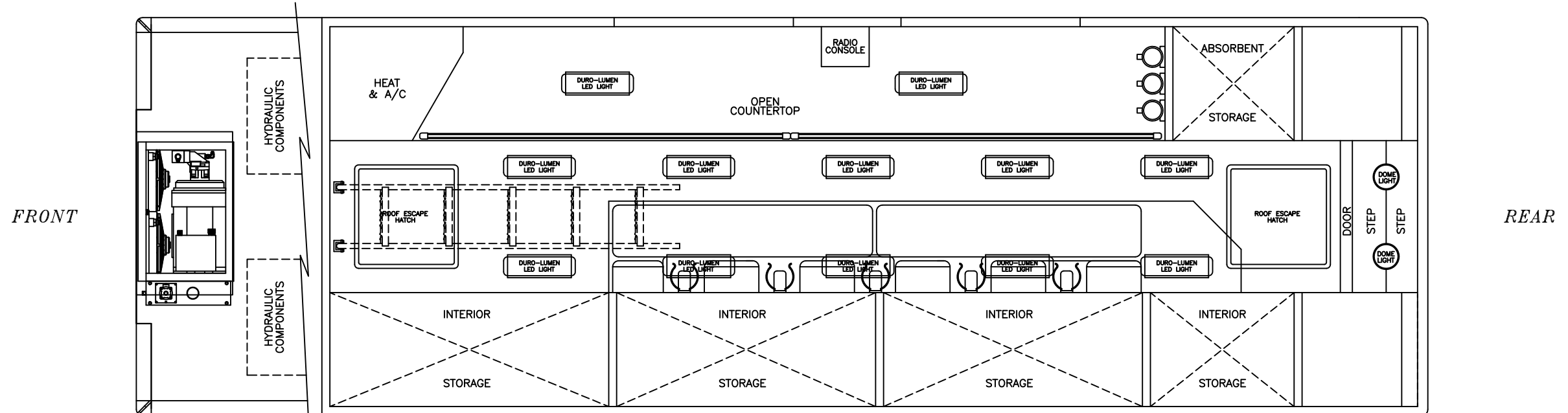
FRONT VIEW



REAR VIEW



FRONT VIEW



INTERIOR FLOOR PLAN VIEW

HEAVY RESCUE VEHICLE
 CUSTOM DESIGNED FOR
NEW HAVEN FIRE DEPARTMENT
 NEW HAVEN, CT
 BY RESCUE 1

NOTES:

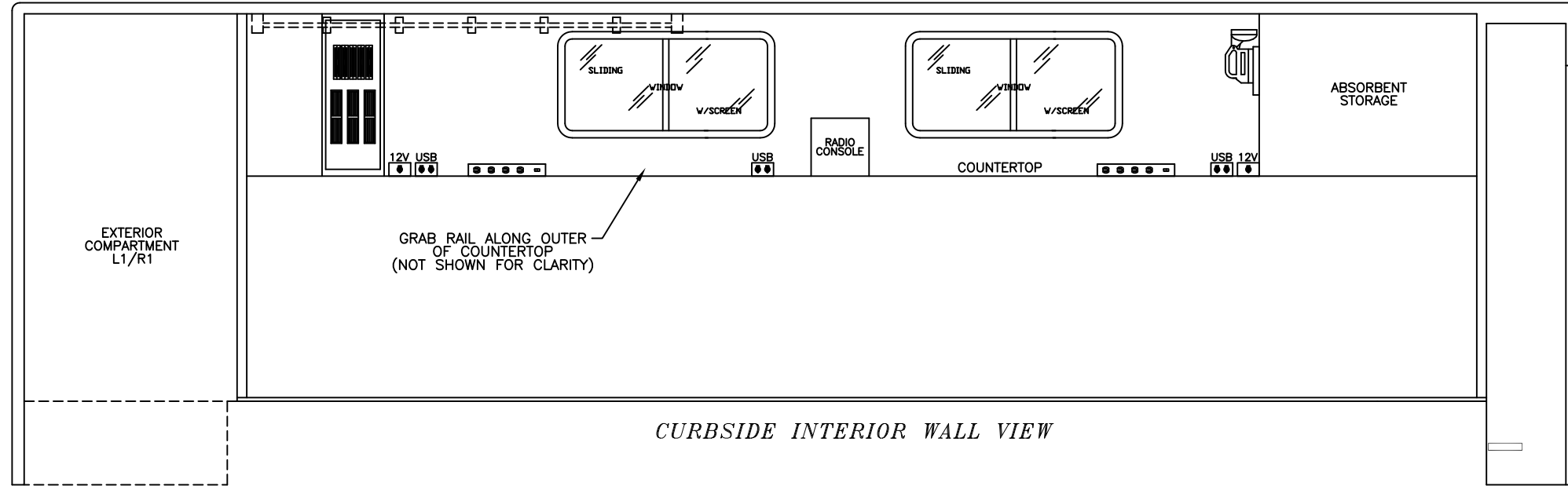
1. DRAWINGS ARE FOR REPRESENTATIONAL PURPOSES ONLY.
2. ALL DIMENSIONS ARE APPROXIMATE.
3. COMPARTMENT DIMENSIONS REPRESENT WALL TO WALL MEASUREMENTS. PASS THROUGH OPENING WILL BE SMALLER.
4. ALL DIMENSIONS FOR OVERALL HEIGHT AND OVERALL LENGTH ARE APPROXIMATE UNTIL THE CHASSIS IS BUILT AND RECEIVED AT OUR FACTORY.

REV	QW #	DATE	DRAWN BY	APVD BY
E	0007	6-28-18	RAR	--
D	0006	4-4-18	RAR	--
C	0005	2-23-18	RAR	--
B	0004	12-11-17	RAR	--
A	0002	10-20-17	RAR	--
REVISIONS				

	TITLE HEAVY RESCUE VEHICLE	
	CUSTOMER NEW HAVEN FIRE DEPARTMENT	
	VEHICLE TYPE	
	FORM# THIS DRAWING MADE FROM: REV#	
DO NOT SCALE DRAWING		
DRAWN	ROGER RITTER	DATE 9-12-17
APPV'D		DATE
SCALE	3/4" = 1'-0"	SHEET 2 OF 3
JOB#	R321	DWG# 4212

NOTICE: This drawing and data thereon shall not be duplicated, used or disclosed to others for procurement or manufacturing purposes, except as otherwise authorized by contract, without written permission of P.L. CUSTOM BODY & EQUIPMENT CO. INC. We reserve the right to make changes at any time, without notice, in materials, equipment & specifications. Written specifications take precedence over drawings which are for clarity only. All reproductions shall bear this notice.

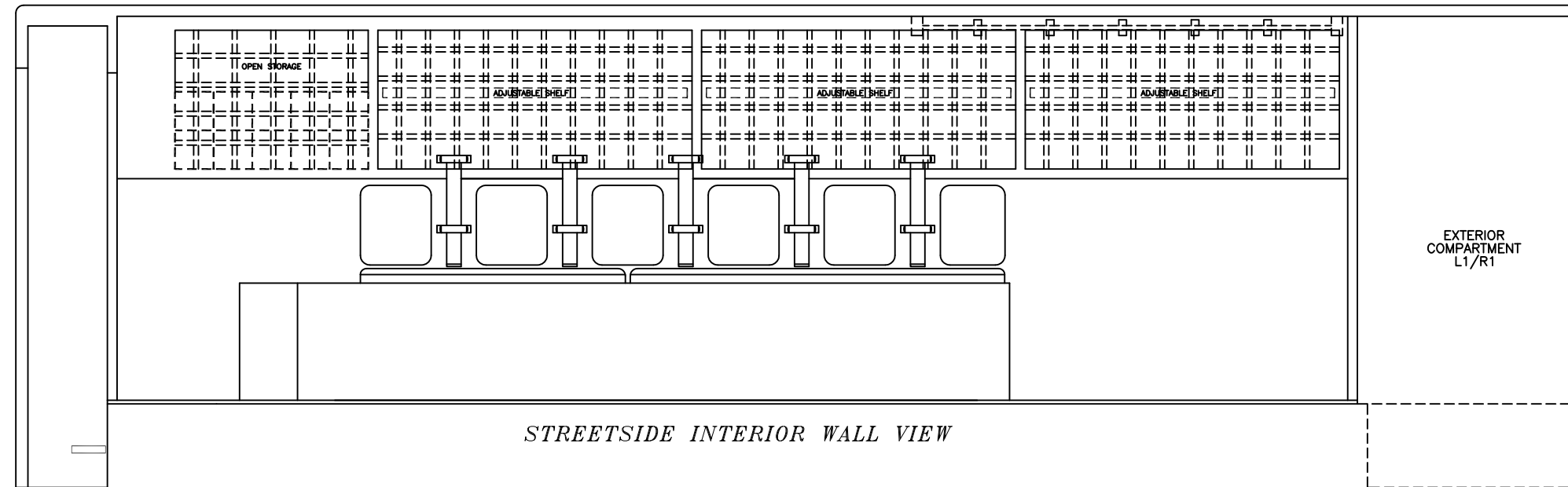
FRONT



REAR

CURBSIDE INTERIOR WALL VIEW

REAR



FRONT

STREETSIDE INTERIOR WALL VIEW

HEAVY RESCUE VEHICLE
 CUSTOM DESIGNED FOR
NEW HAVEN FIRE DEPARTMENT
 NEW HAVEN, CT
 BY RESCUE 1

NOTES:

1. DRAWINGS ARE FOR REPRESENTATIONAL PURPOSES ONLY.
2. ALL DIMENSIONS ARE APPROXIMATE.
3. COMPARTMENT DIMENSIONS REPRESENT WALL TO WALL MEASUREMENTS. PASS THROUGH OPENING WILL BE SMALLER.
4. ALL DIMENSIONS FOR OVERALL HEIGHT AND OVERALL LENGTH ARE APPROXIMATE UNTIL THE CHASSIS IS BUILT AND RECEIVED AT OUR FACTORY.

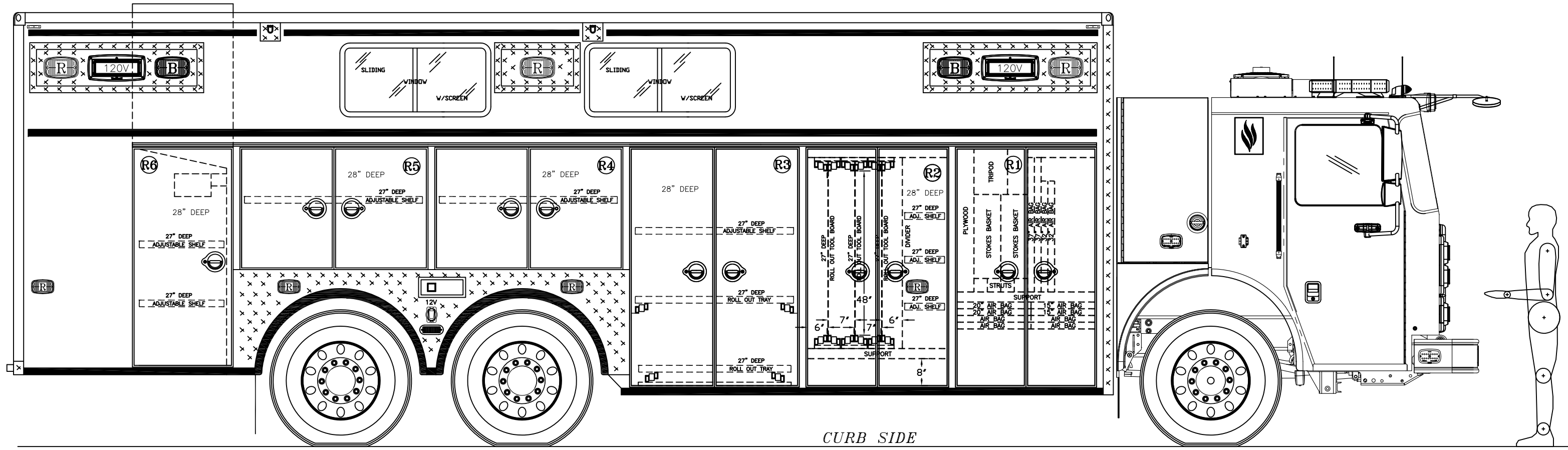
REV	QW #	DATE	DRAWN BY	APV BY
E	0007	6-28-18	RAR	--
D	0006	4-4-18	RAR	--
C	0005	2-23-18	RAR	--
B	0004	12-11-17	RAR	--
A	0002	10-20-17	RAR	--

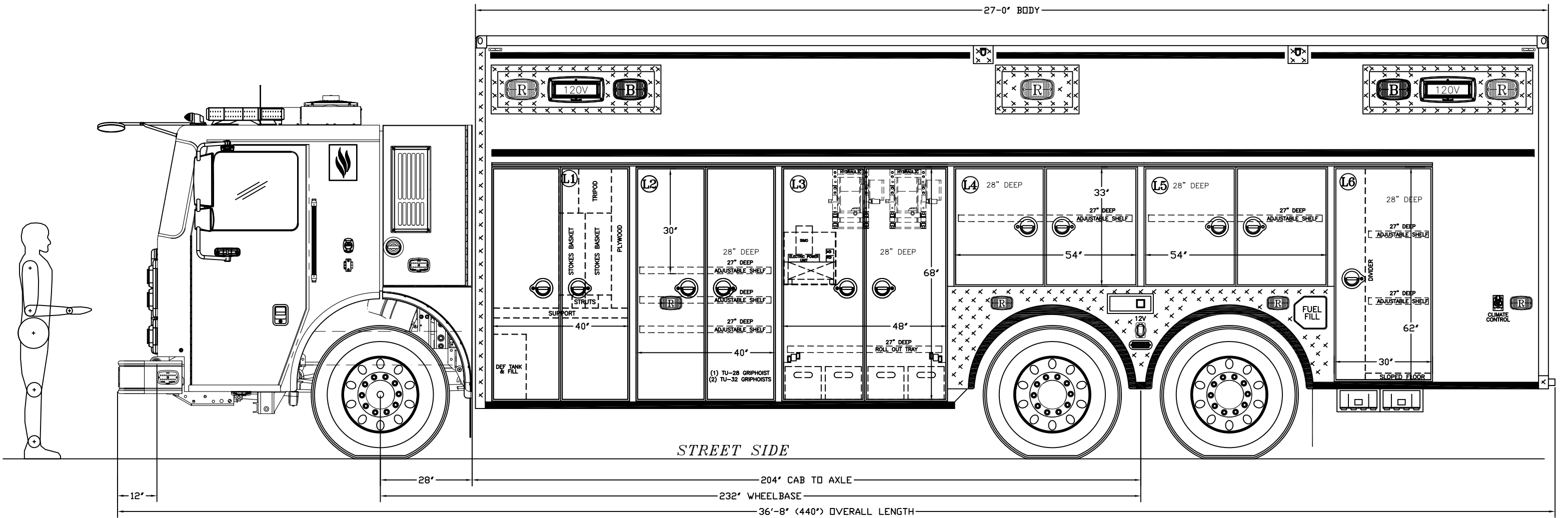
REVISIONS

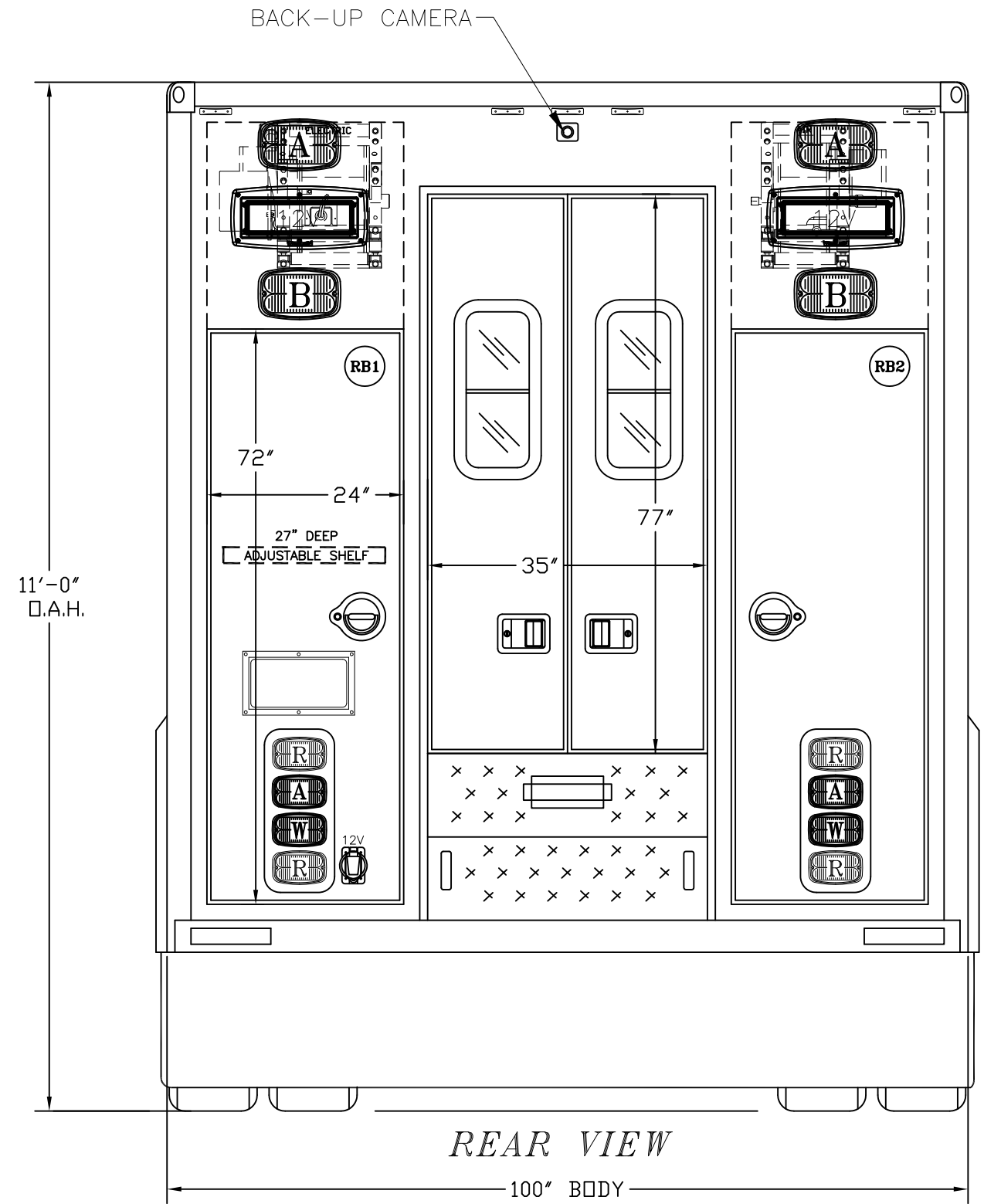
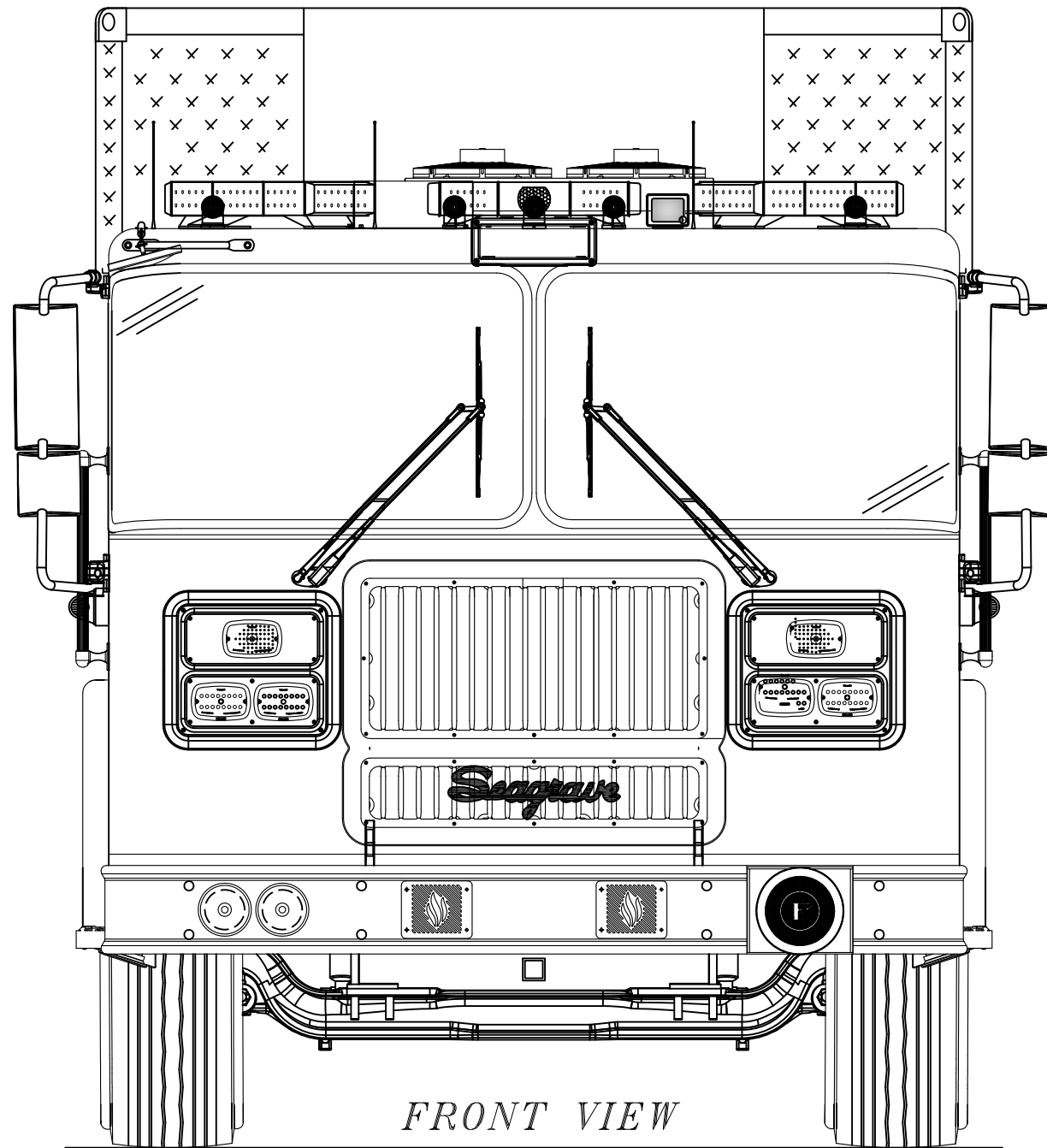
RESCUE 1

NOTICE:
 This drawing and data thereon shall not be duplicated, used or disclosed to others for procurement or manufacturing purposes, except as otherwise authorized by contract, without written permission of P.L. CUSTOM BODY & EQUIPMENT CO. INC. We reserve the right to make changes at any time, without notice, in materials, equipment & specifications. Written specifications take precedence over drawings which are for clarity only. All reproductions shall bear this notice.

TITLE		HEAVY RESCUE VEHICLE	
CUSTOMER		NEW HAVEN FIRE DEPARTMENT	
VEHICLE TYPE		THIS DRAWING MADE FROM: REV.	
DO NOT SCALE DRAWING			
DRAWN	ROGER RITTER	DATE	9-12-17
APPROV'D		DATE	
SCALE	3/4" = 1'-0"	SHEET	3 OF 3
JOB#	R321	DWG#	4212







BACK-UP CAMERA

11'-0"
D.A.H.

72"

24"

27" DEEP
ADJUSTABLE SHELF

RB1

A

B

R

A

W

R

12V

77"

35"

RB2

A

B

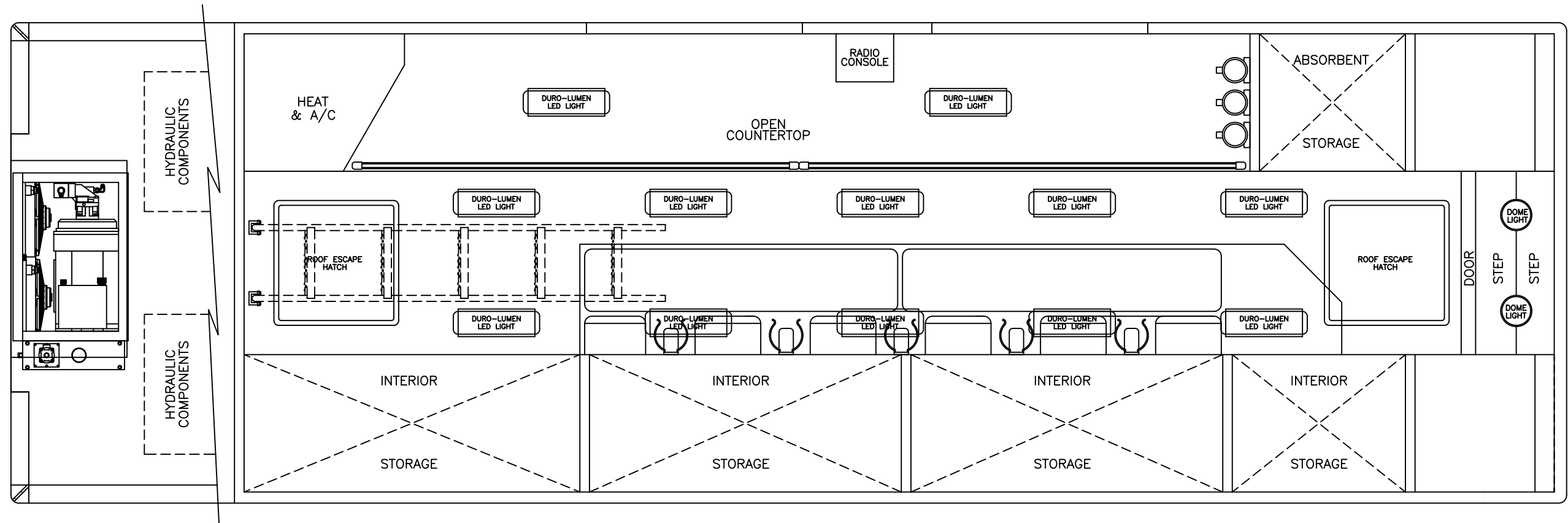
R

A

W

R

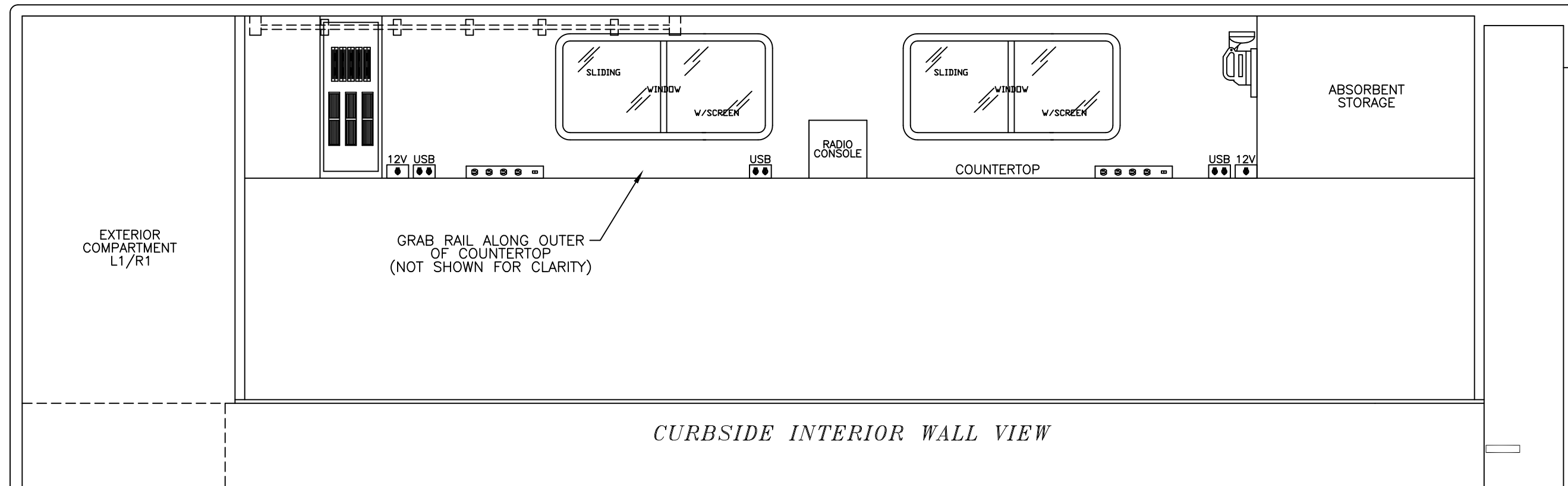
FRONT



REAR

INTERIOR FLOOR PLAN VIEW

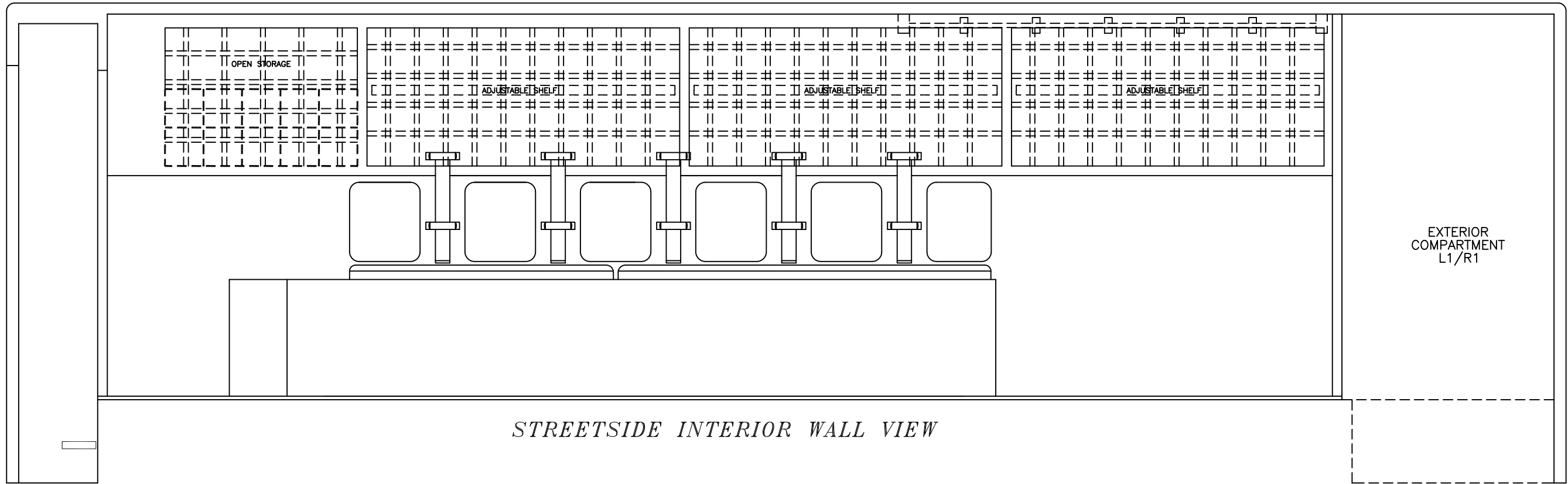
FRONT



REAR

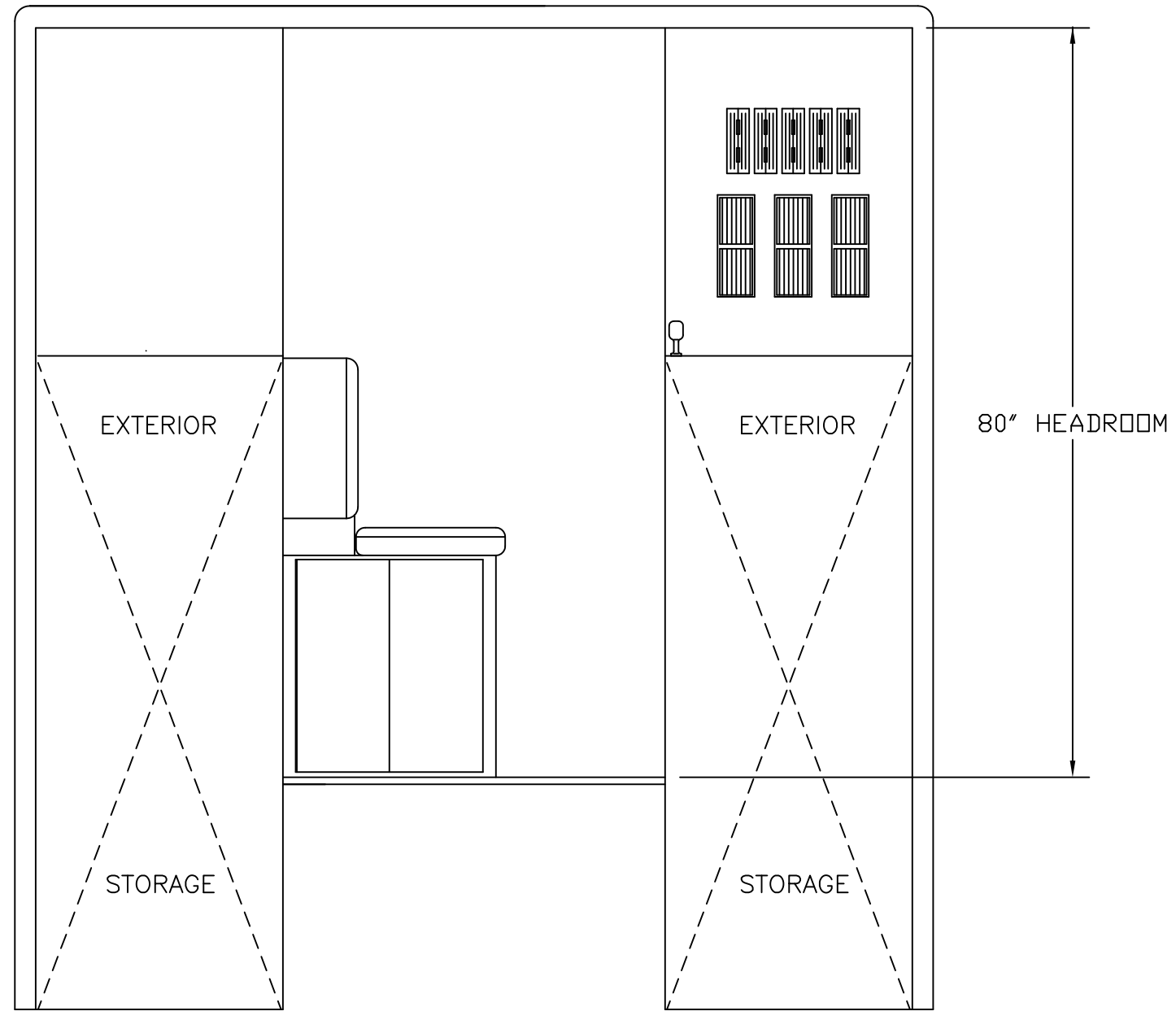
CURBSIDE INTERIOR WALL VIEW

REAR



STREETSIDE INTERIOR WALL VIEW

FRONT



FRONT VIEW